

Jibike's



Immerse Yourself in the Serenity of Nature

Nestled within the crest of the Maitama's hills, Jibike's at The Sanctum offers an inspiring fusion of sophistication, security, exclusivity and environmental sustainability.





Jibike's

The Vision



Discover the true meaning of luxury in Abuja's most exclusive community; where the sky is an extension of the picturesque hills and greenery; where the exceptional aroma of the breath-taking landscape is a blissful pleasure for the senses; and time is measured by the sound signature of nature moaning winds tickling between the rocks and nature. Jibike's blends architecture, stone, glass and greenery to distinguish itself.

A Haven of Luxury & Tranquillity

- 10 FLOORS

- 5 PENTHOUSES

- TRIPLE-HEIGHT LOBBY

- 10 HIGH-SPEED PRIVATE ELEVATORS

- SMART HOME TECHNOLOGY

- 360-DEGREE SECURITY COVERAGE

- 24 X 7 CONCIERGE

- NATURAL SWIMMING POOL

- MAN-MADE FOUNTAIN

- PRIVATE GREEN PARK





AMENITIES

A Verdure of Serenity

Set your gaze on a glorious strip of foliage overflowing
with sensational amenities



2, 3 & 4-Bedroom
Apartments



Private Green
Park



Unparalleled
views of the hills



Man-made Water-
fall Fountain



Natural
Swimming Pool



Exclusive
Location



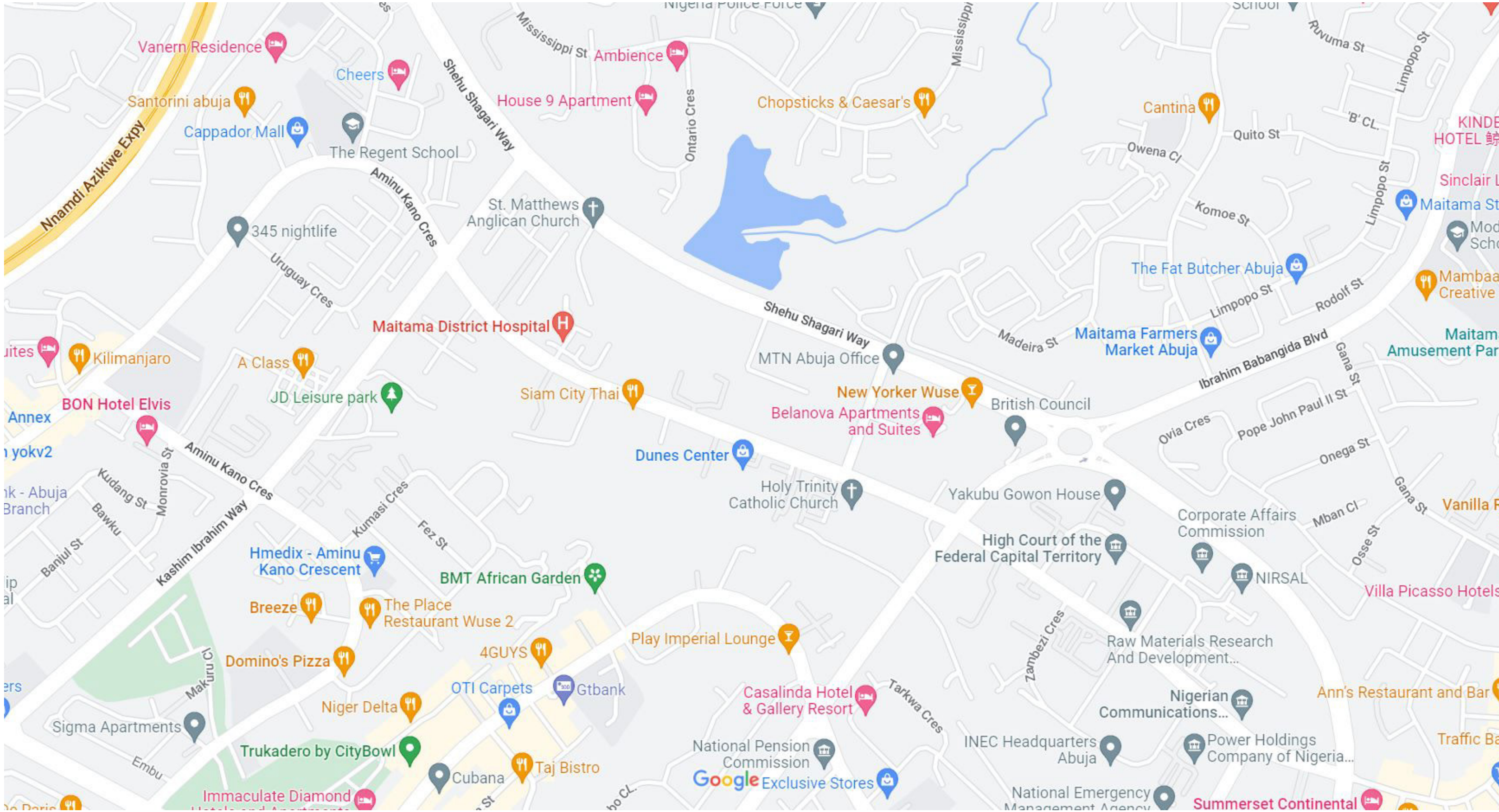
*Maitama
Abuja*

*A Paradisal
Abode*



Perfectly Connected

- 05 Minutes to Central Business District
- 05 Minutes to Wuse Commercial District
- 10 Minutes to Aso Rock Villa
- 10 Minutes to Jabi Lake
- 30 Minutes to Nnamdi Azikiwe International Airport



INTERIORS

In Harmony with Nature

Light, spacious, modern, green. Every aspect of your Jibike's Apartment is constructed to mimic the freedom and serenity felt when your head is in the hills and feet on open plains



Singapore Rain-Forest
Style Architecture



Floor-to-Ceiling
Windows



Rooms with En-
suite Bathrooms



Open kitchen with state-
of-the-Art Appliances









Designed with you in mind

Our fit-for-purpose kitchen spaces are exquisitely designed to meet your immediate needs. It's a beautiful part of the home with state-of-the-art kitchen fittings and equipment that will have you spending much more time in it.







THE PARK

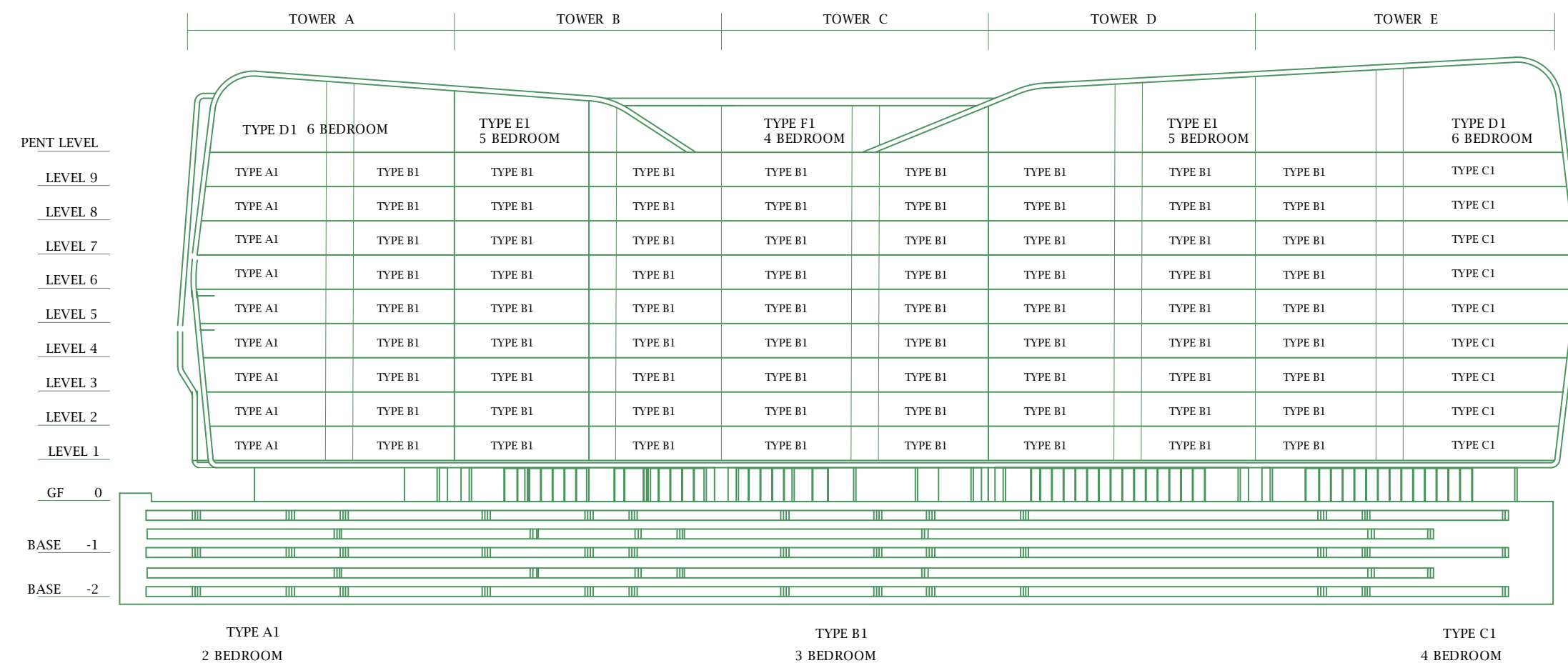
*This is what you see
when you take a walk*

Thoughtfully crafted landscape architecture that balances location, luxury and functionality so that you don't have to compromise meaningful downtime.

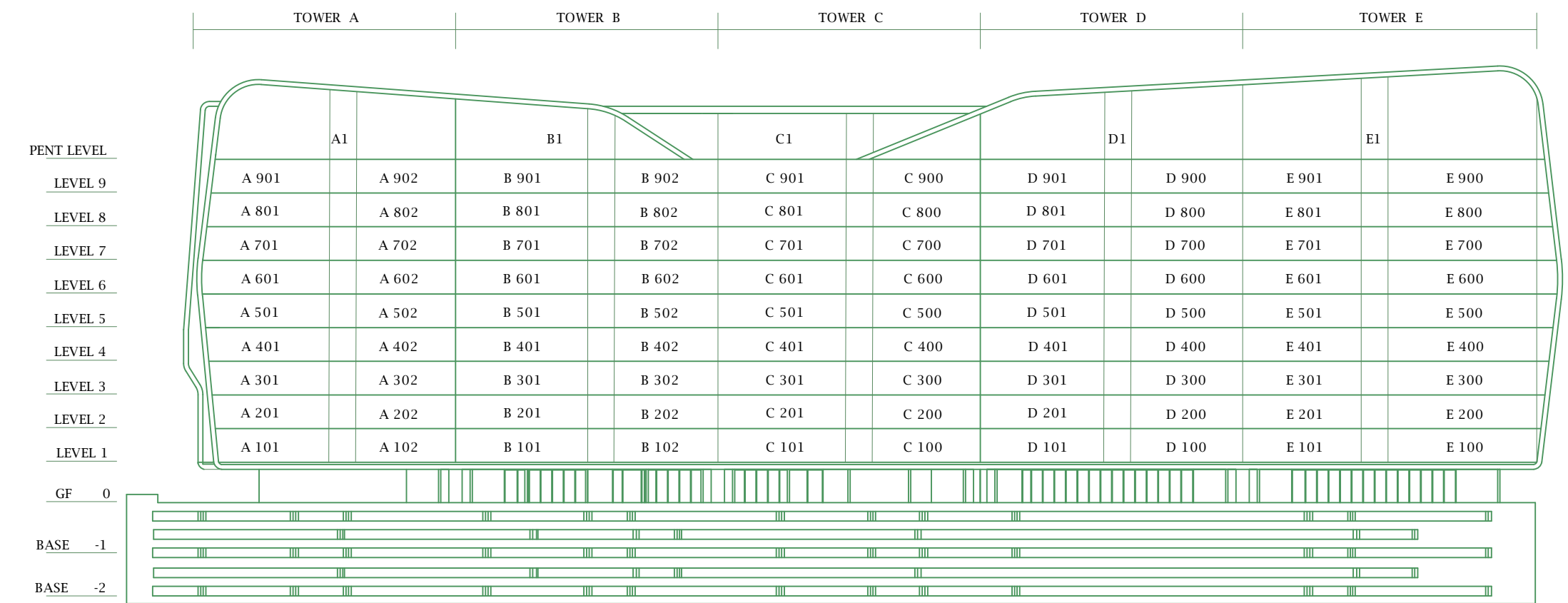
Trade-in your outings for one of life's simplest, most exclusive pleasures — a picnic on open plains!

FLOOR PLANS

Apartment Types

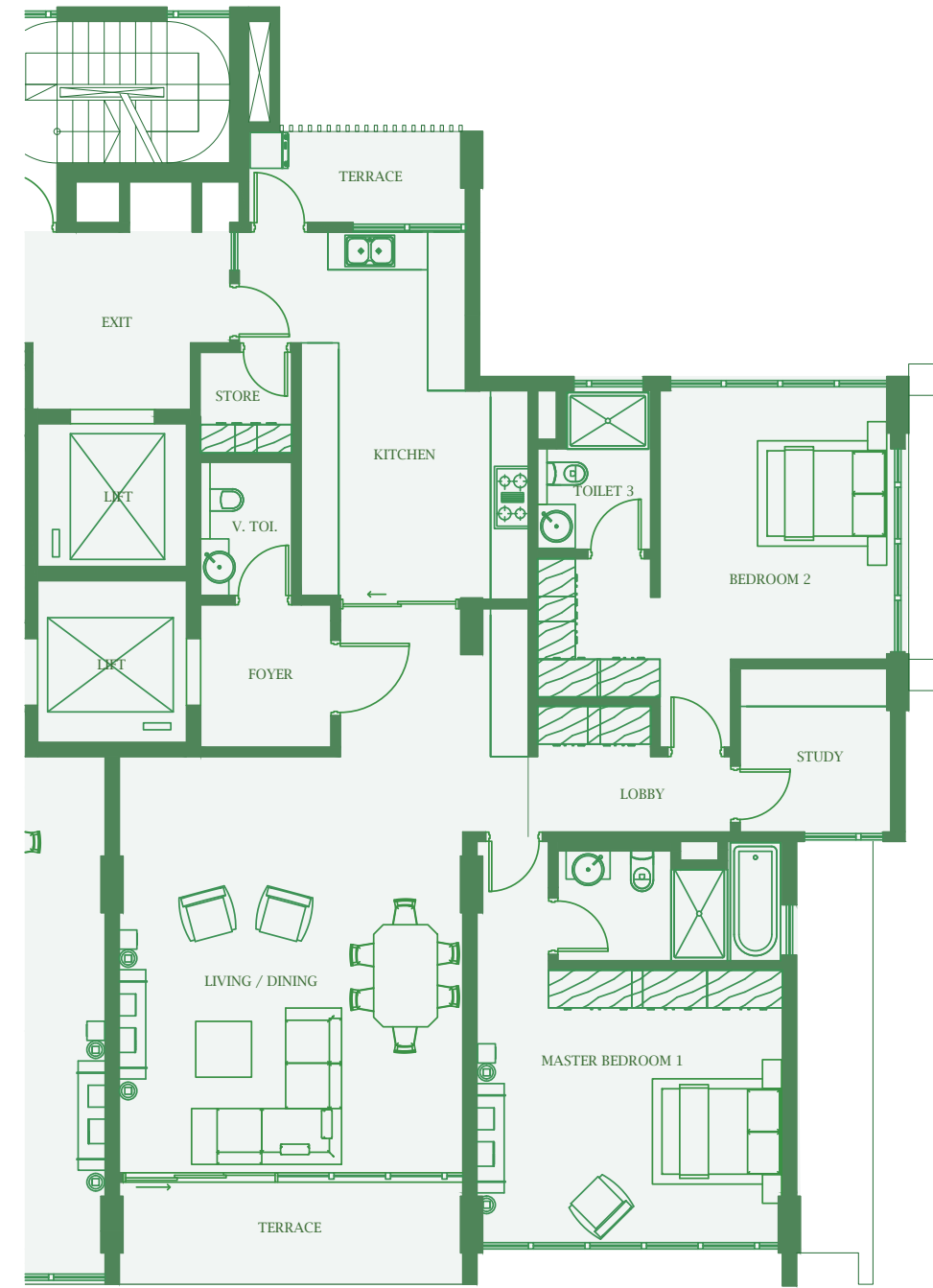


Apartment Numbering



Type A

2 Bedroom Apartment



Type B

3 Bedroom Apartment



Apartment (Tower A)	101	201	301	401	501	601	701	801	901
Floor	1	2	3	4	5	6	7	8	9

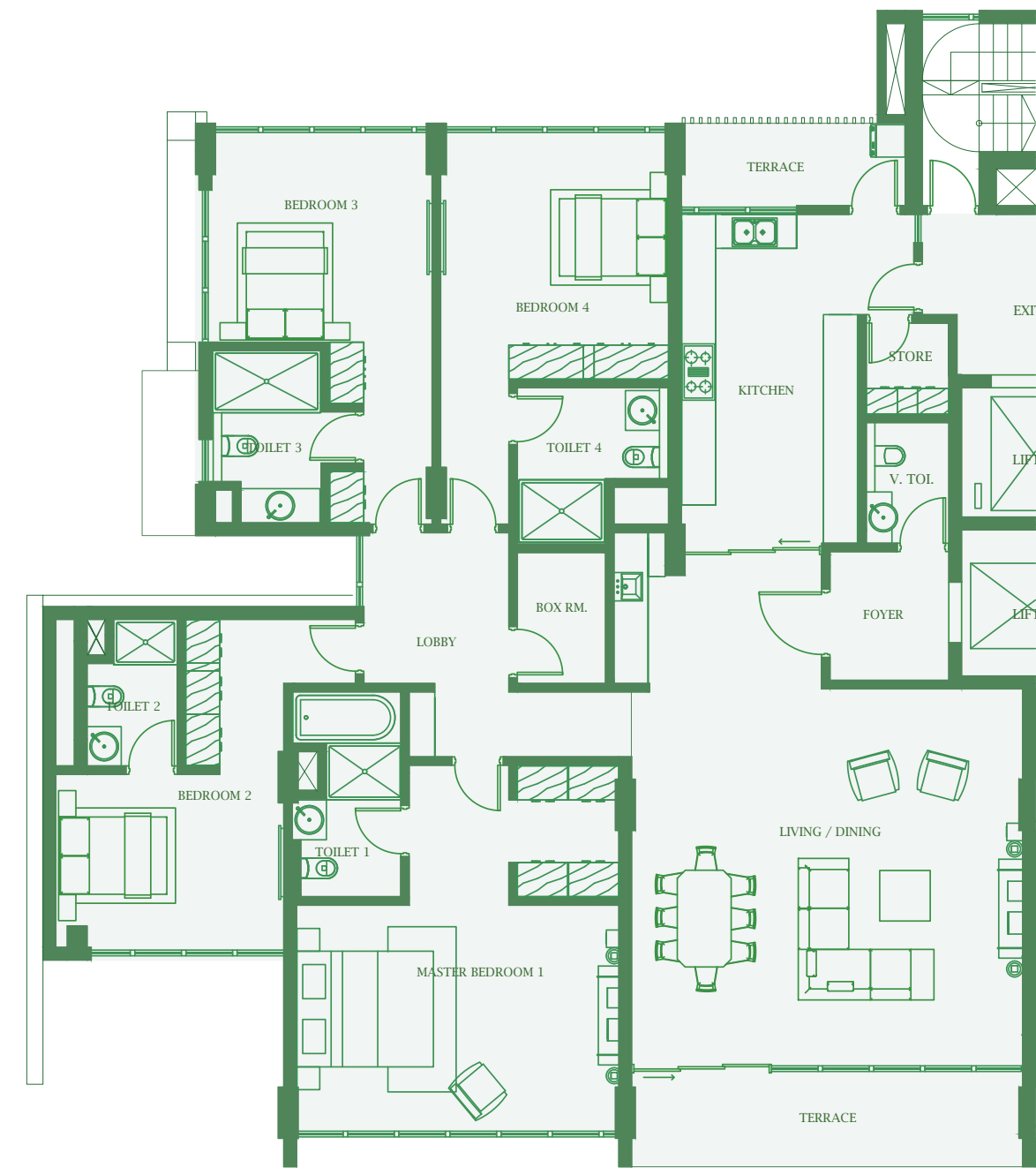
Guest Toilet	3m ²			Store	2m ²				
Living Room/Dining	45m ²			Lift	6m ²				
Study	6m ²			Foyer box room	5m ²				
Master Bedroom	24m ²			Terrace	9m ²				
Kitchen	20m ²			Bedroom 2	21m ²				

TOTAL AREA:
173m²

Apartment (Tower B)	101	201	301	401	501	601	701	801	901
Floor	1	2	3	4	5	6	7	8	9

Master Toilet	6m ²			Store	2m ²				
Living Room/Dining	48m ²			Lift	6m ²				
Kitchen	20m ²			Box room	3m ²				
Master Bedroom	30m ²			Terrace	5m ²				
Bedroom 2	18m ²			Bedroom 3	19m ²				

TOTAL AREA:
201m²



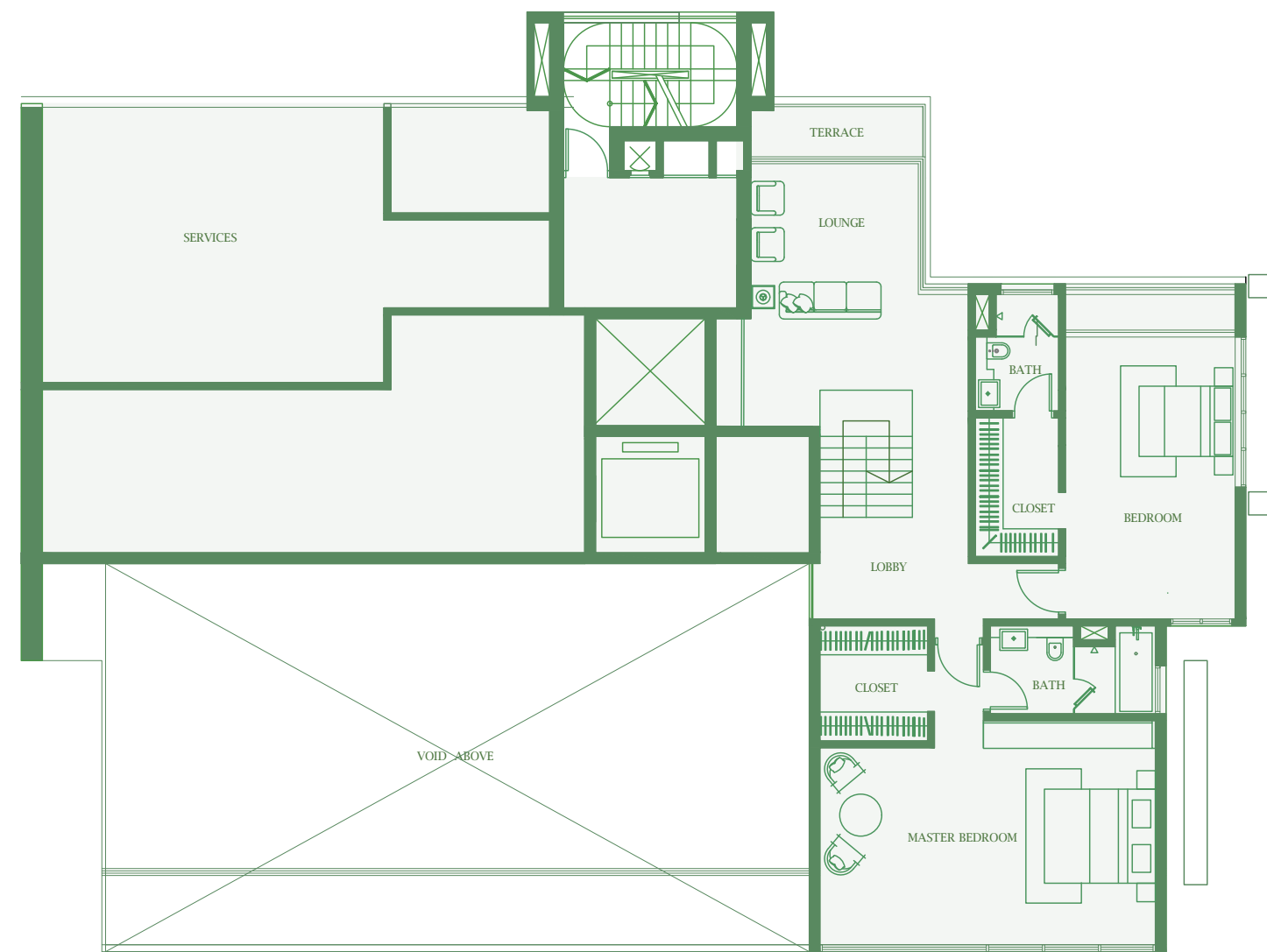
FLOOR PLANS
PENTHOUSES

Apartment (Tower C)	101	201	301	401	501	601	701	801	901
Floor	1	2	3	4	5	6	7	8	9

☺ Guest Toilet	3m ²			☒ Store	2m ²				
🛋 Living Room/Dining	54m ²			🛏 Bedroom 3	19m ²				
🛏 Master Bedroom	31m ²			🚪 Foyer	5m ²				TOTAL AREA: 440m²
🍳 Kitchen	20m ²			○ Terrace	9m ²				
🛏 Bedroom 2	18m ²			🛏 Bedroom 4	20m ²				

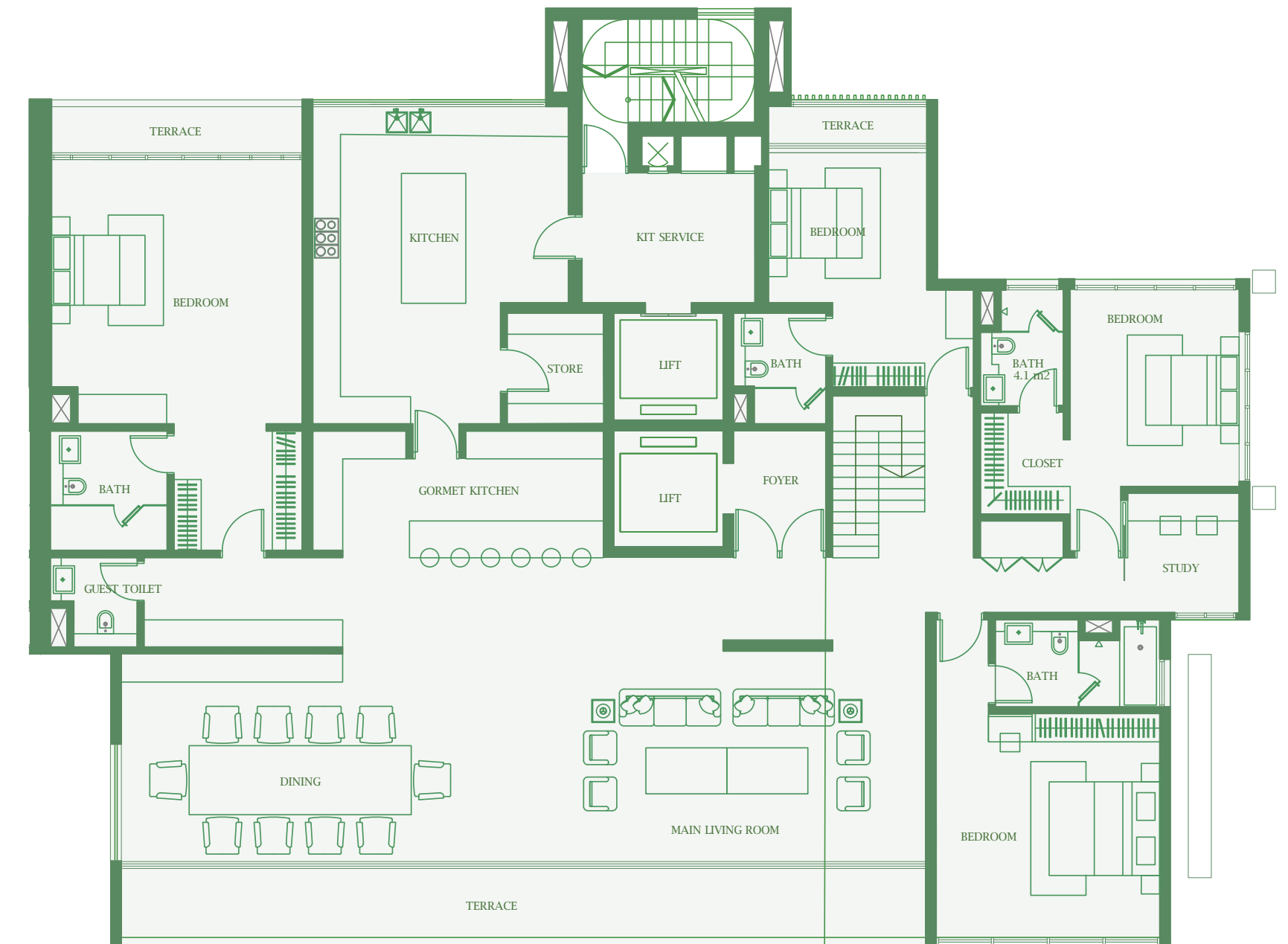
Penthouse 1

Upper Floor



Penthouse 1

Lower Floor



Apartment (Tower A) Penthouse 1 Floor 10

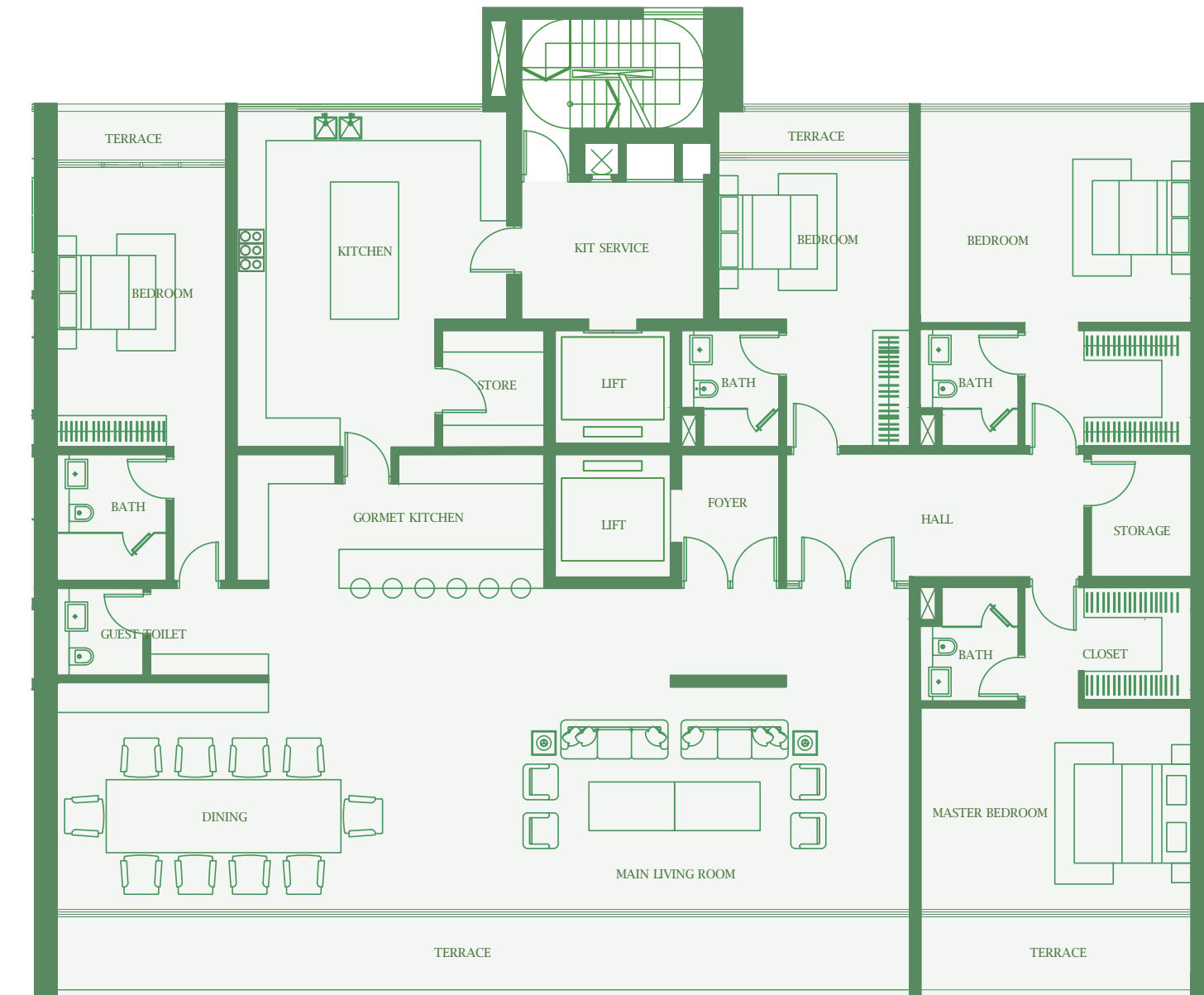
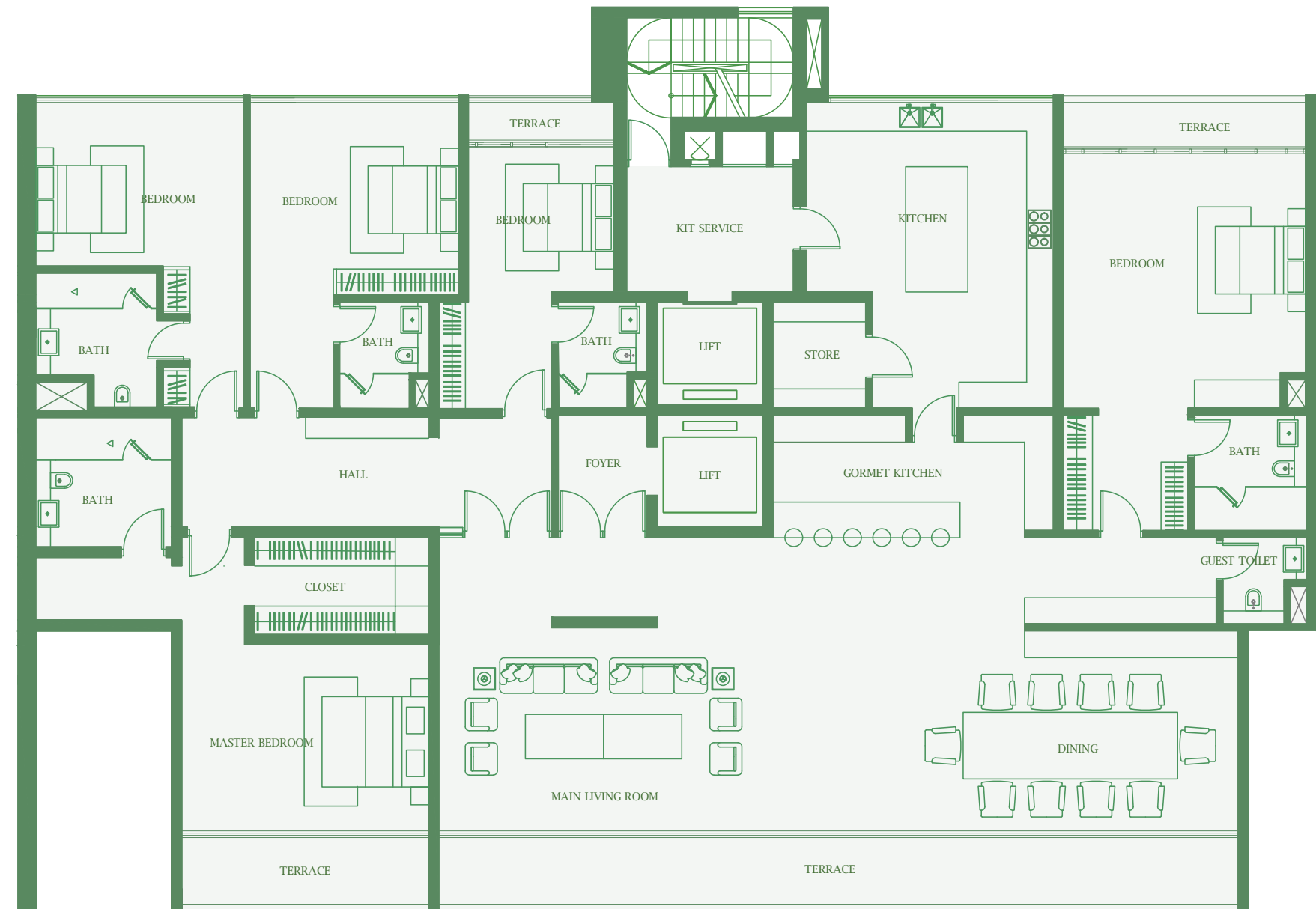
🪑 Lounge	10.5m ²	UPPER FLOOR 159m ²
🪑 Lobby	10.5m ²	
🛏 Master Bedroom	10.5m ²	
🛏 Bedroom 2	10.5m ²	

Apartment (Tower A) Penthouse 1 Floor 10

🪑 Guest Toilet	2.9m ²	🪑 Store	4.9m ²	LOWER FLOOR 430m ²
🪑 Living Room	57.6m ²	🪑 Kit Service	10.5m ²	
🪑 Dining	38.3m ²	🪑 Bedroom 2	25.9m ²	TOTAL AREA: 489m ²
🪑 Kitchen	34.4m ²	🪑 Terrace	5m ²	
🪑 Gormet Kitchen	17.4m ²	🛏 Bedroom 3	21.1m ²	
🛏 Master Bedroom	38.5m ²	🛏 Bedroom 4	17.0m ²	

Penthouse 2

Penthouse 3



Apartment (Tower B) Penthouse 2
Floor 10

Guest Toilet	2.9m ²	Store	4.9m ²	LOWER FLOOR 430m ²
Living Room	57.6m ²	Kit Service	10.5m ²	
Dining	38.3m ²	Bedroom 2	25.9m ²	TOTAL AREA: 502m ²
Kitchen	34.4m ²	Terrace	5m ²	
Gourmet Kitchen	17.4m ²	Bedroom 3	21.1m ²	
Master Bedroom	38.5m ²	Bedroom 4	17.0m ²	

Apartment (Tower C) Penthouse 3
Floor 10

Guest Toilet	2.9m ²	Store	5.1m ²	TOTAL AREA: 440m ²
Living Room	61.2m ²	Kit Service	10.5m ²	
Dining	40.6m ²	Bedroom 2	26.9m ²	
Kitchen	34.4m ²	Hall	15.8m ²	
Gourmet Kitchen	17.4m ²	Bedroom 3	22.9m ²	
Master Bedroom	22.9m ²	Bedroom 4	19.4m ²	

Penthouse 4

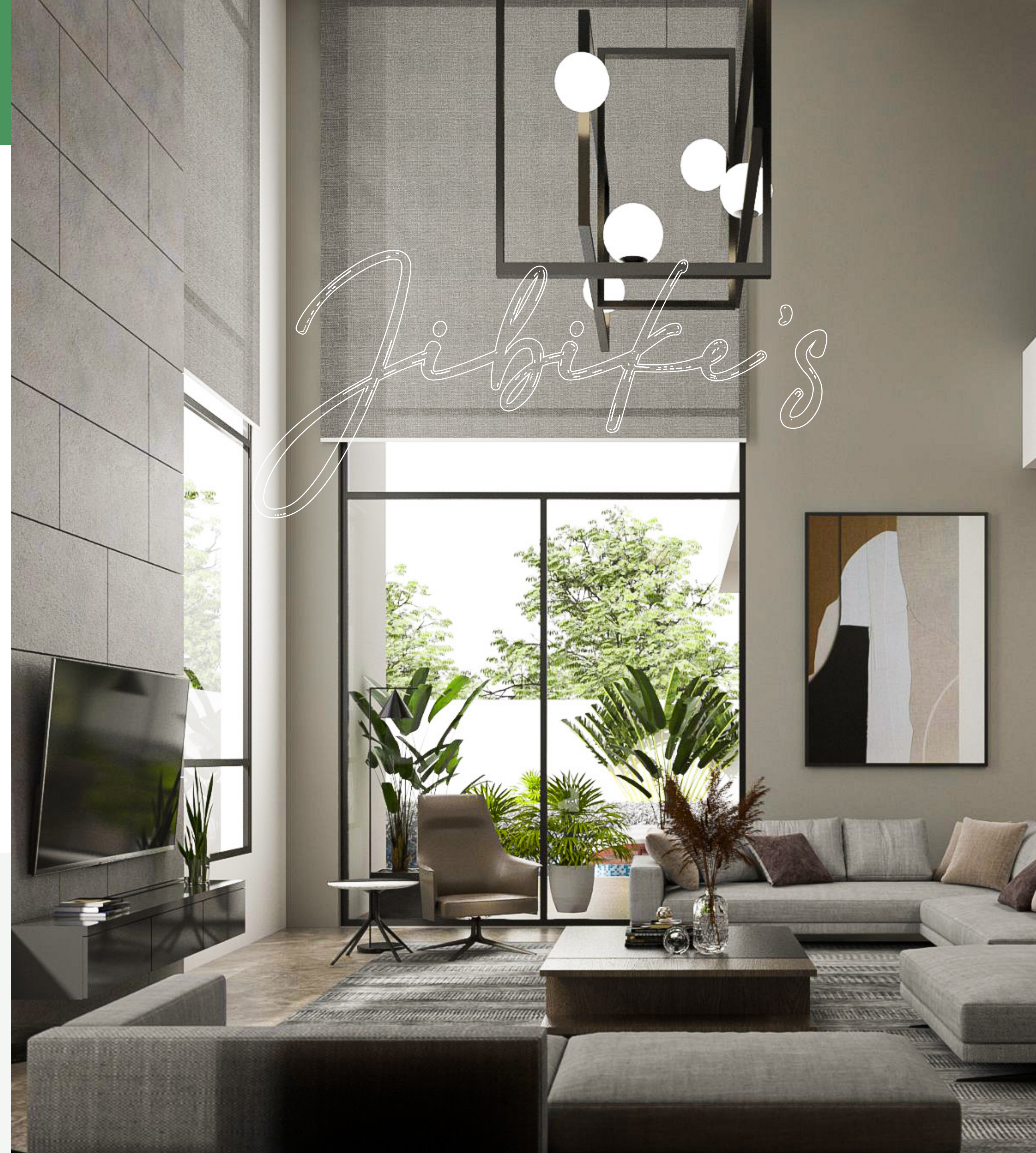
5 bedrooms



Apartment (Tower D) Penthouse 4
Floor 10

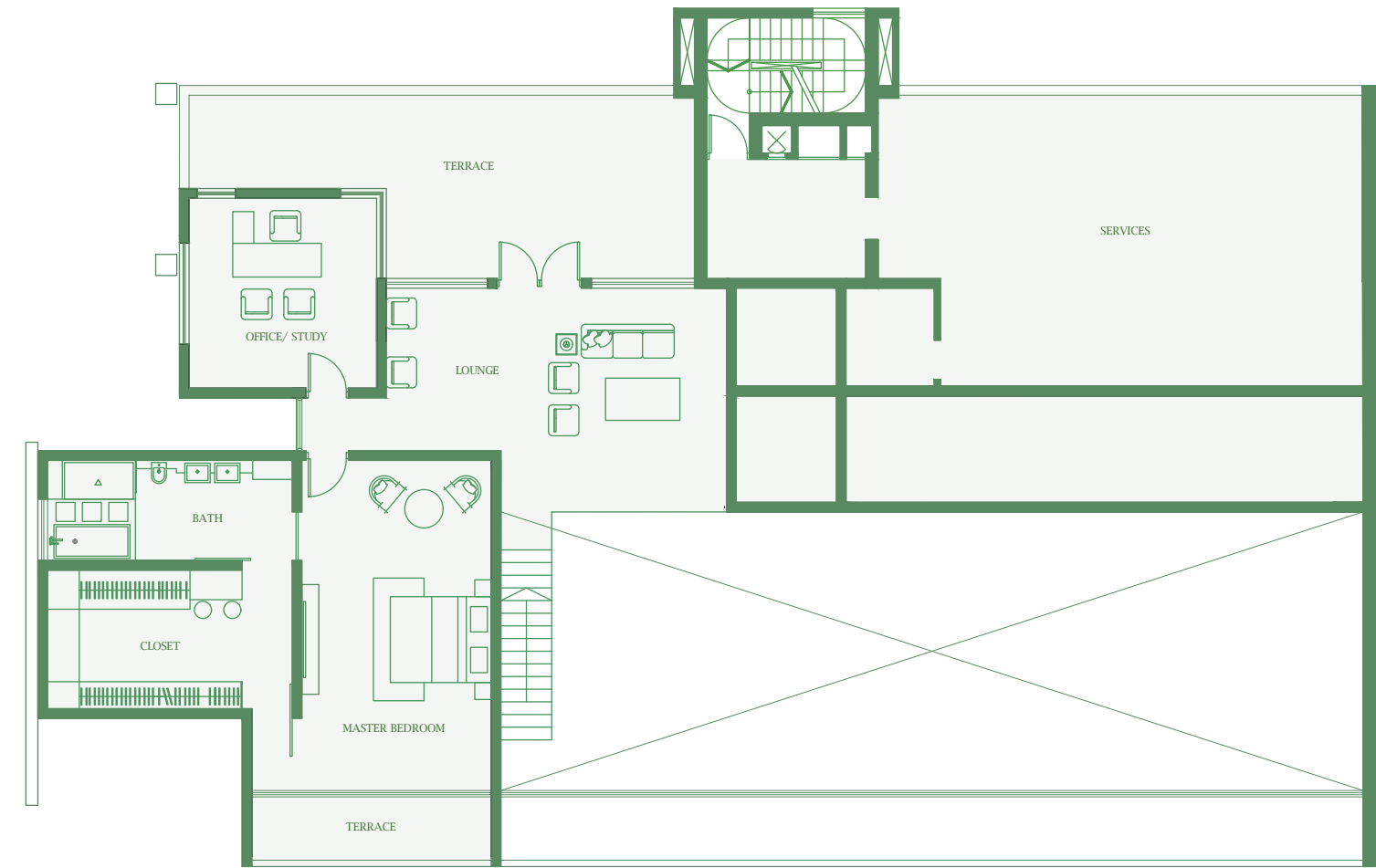
🚽 Guest Toilet	2.9m ²	🗄 Store	4.9m ²
🛋 Living Room	64.4m ²	🛏 Kit Service	10.5m ²
🍴 Dining	45.5m ²	🛏 Bedroom 2	26.6m ²
🍳 Kitchen	34.4m ²	🛏 Bedroom 3	25.1m ²
🍳 Gourmet Kitchen	17.4m ²	🛏 Bedroom 4	22.9m ²
🛏 Master Bedroom	38.5m ²	🛏 Bedroom 5	17.1m ²

TOTAL AREA:
512m²



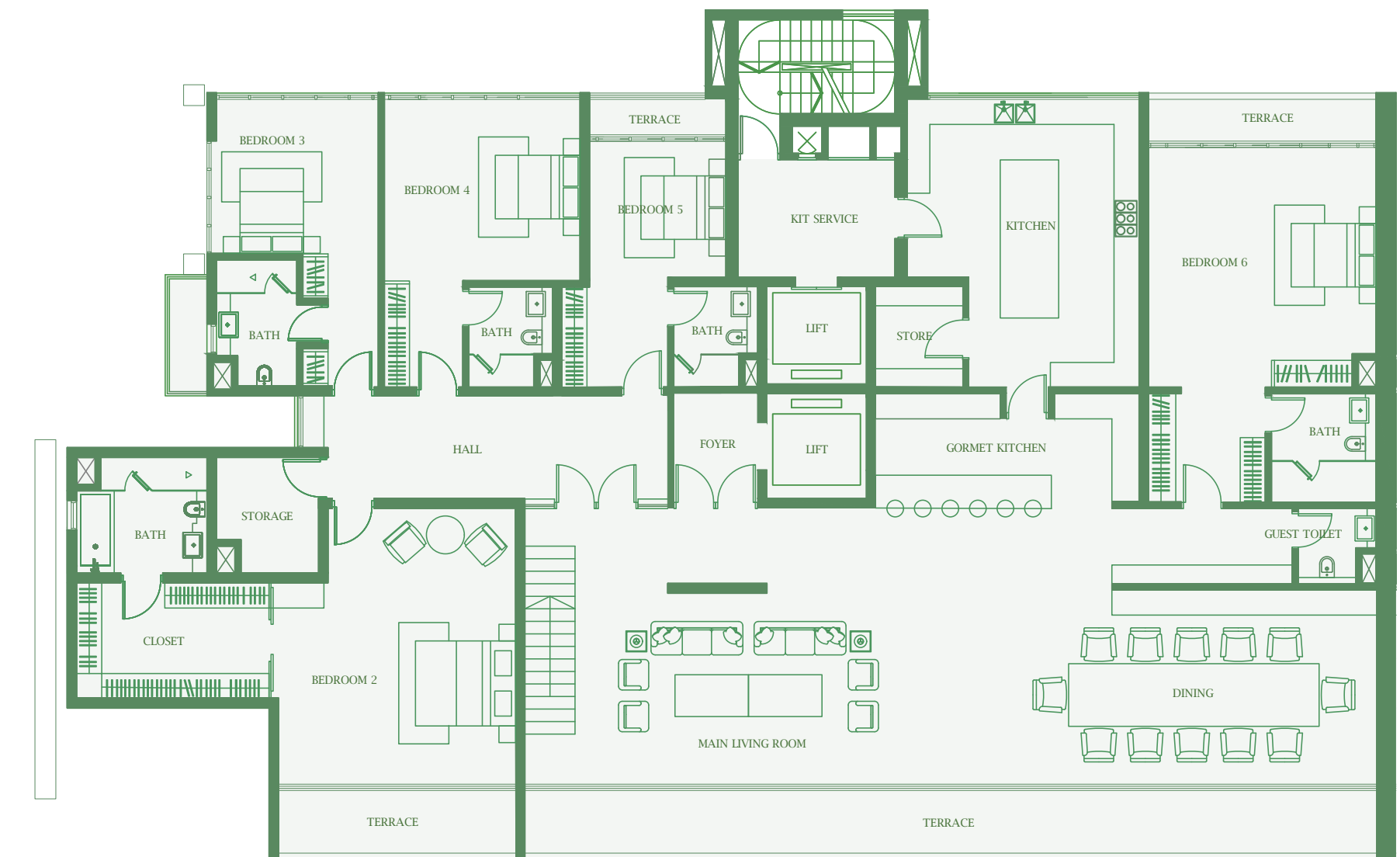
Penthouse 5

Upper Floor



Penthouse 5

Lower Floor



Apartment (Tower E) Penthouse 5 Floor 10

🪑 Lounge	41.2m ²	UPPER FLOOR 204m ²
📄 Study/Office	19.9m ²	
🛏 Master Bedroom	37.5m ²	
🚪 Closet	19m ²	

Apartment (Tower E) Penthouse 5 Floor 10

🚪 Guest Toilet	2.9m ²	📦 Storage	6.2m ²	LOWER FLOOR 534m ²
🛋 Living Room	67.4m ²	🚪 Hall	20.8m ²	
🍴 Dining	47.8m ²	🛏 Bedroom 3	20m ²	TOTAL AREA: 738m ²
🍳 Kitchen	34.4m ²	🛏 Bedroom 4	25m ²	
🍳 Gourmet Kitchen	17.4m ²	🛏 Bedroom 5	17.1m ²	
🛏 Bedroom 2	35.6m ²	🛏 Bedroom 6	38.5m ²	



Jibikes

The Sanctum, 1, Red Sea Close, off
Aguiyi Ironsi Street, Maitama, FCT Abuja

Marketing Office

Plot 135 Adetokunbo Ademola Crescent,
Wuse 2, FCT Abuja

e. enquiries@centrumproperties.com